

# NEWSLETTER

## TERM DATES 2016 - 2017

Term 1  
5th September to  
21st October

INSET  
3rd October

Term 2  
31st October  
20th December

INSET  
21st December

Term 3  
4th January to  
10th February

INSET  
3rd January

Term 4  
21st February to  
31st March

INSET  
20th February

Term 5  
18th April to  
26th May

BANK HOLIDAY  
1st May

Term 6  
6th June to  
21st July

INSET DAY  
5th June

## Welcome!

We have four new pupils who started school this week! Benjamin, Mathias and Nathanael in Year 4 and Joshua in year 6 are brothers, so a very warm welcome to you all!

## Hildenborough Road Races - Monday 1st May 2017

Date for your diary!

This is a fantastic village event which our school always enjoys. (Entry details to follow in due course). The organisers desperately need volunteers to help on the day so if you can spare an hour please let Mrs Rugg know or contact [pandadavies@hotmail.co.uk](mailto:pandadavies@hotmail.co.uk) (and mention you are connected to our school).



## Out of School Achievements

We would like to celebrate the children's success and achievements in sport, music or any club they attend out of school. Please send in any certificates we can display to Mrs Rugg (Please DO NOT send in originals).



## Out of school clubs

If your child attends a club you think may be of interest to other children and parents please send a flyer or the details of the club to Mrs Rugg and we will display them.

**TERM DATES  
2016 - 2017**

Term 1  
5th September to  
21st October

INSET  
3rd October

Term 2  
31st October  
20th December

INSET  
21st December

Term 3  
4th January to  
10th February

INSET  
3rd January

Term 4  
21st February to  
31st March

INSET  
20th February

Term 5  
18th April to  
26th May

BANK HOLIDAY  
1st May

Term 6  
6th June to  
21st July

INSET DAY  
5th June

**September 2017 Admissions**

A final reminder for those of you who have a child born between 1st September 2012 and 31st August 2013.

You need to apply for their primary school place by 15th January 2017, **even if they already have a sibling at the school.**

**You can apply online at [kent.gov.uk/ola](http://kent.gov.uk/ola)**



**Severe Weather**

Should the school be unable to open or have to close early due to bad weather conditions, you will be notified via a ParentmailPMX email or a text message.

To make this successful, please could you ensure your email address and mobile phone number are up to date on your ParentmailPMX account.

Closure details will also be posted on the [www.kentclosures.co.uk](http://www.kentclosures.co.uk) website.

The local radio stations will also be informed so tune in to one of the following:-

KMFM - West Kent 96.2/101.6 fm

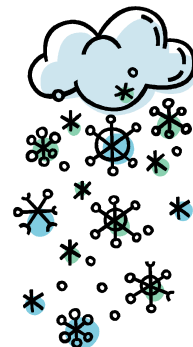
[www.kentschoolclosures.co.uk](http://www.kentschoolclosures.co.uk)

BBC Radio Kent 96.7/104.2 fm

[www.bbc.co.uk/kent](http://www.bbc.co.uk/kent)

Heart FM 103.1/102.8 fm

[www.heart.co.uk/kent](http://www.heart.co.uk/kent)



# DIARY DATES



## TERM DATES 2016 - 2017

Term 1  
5th September to  
21st October

INSET  
3rd October

Term 2  
31st October  
20th December

INSET  
21st December

Term 3  
4th January to  
10th February

INSET  
3rd January

Term 4  
21st February to  
31st March

INSET  
20th February

Term 5  
18th April to  
26th May

BANK HOLIDAY  
1st May

Term 6  
6th June to  
21st July

INSET DAY  
5th June

18 Jan 10.20 am High Hopes Act of Worship  
25 Jan 9.30 am YR Hearing Tests  
10 Feb End of Term  
20 Feb Inset Day  
21 Feb Term 4  
31 Mar End of Term  
18 Apr Term 5  
18 Apr 9.30 am Easter Service @ St John's  
26 Apr Parent Consultations 3.30pm - 6.30pm  
(appointments to be arranged in due course)  
27 Apr Parent Consultations 3.30pm - 7.30pm  
(appointments to be arranged in due course)  
26 May End of Term  
05 Jun Inset Day  
06 Jun Term 6  
21 July End of Term

## Letters Home

Curriculum Letters

Bikeability Y6

Theatre Workshop Y5 & Y6

Worship theme next week: Reflecting Light

Christian Value: Reverence

Thought for the week : A heart at peace  
gives the body life.

