

NEWSLETTER

TERM DATES 2017 - 2018

Term 1
4th September to
20th October

Term 2
31st October
19th December

INSET
30th October
20th December

Term 3
4th January to
9th February

Term 4
19th February to
29th March

Term 5
16th April to
25th May

BANK HOLIDAY
7th May

Term 6
5th June to
20th July

INSET
4th June
23rd July
24th July

Gardening Club - Wednesday 17th January

Gardening Club will begin again on Wednesday 17th January.

The children will need a change of clothes, wellies, a raincoat and named gardening gloves.

The wellies, raincoat and gardening gloves can stay at school, but the children will come home in their 'gardening clothes' each week, otherwise they won't have long enough outside!



Mobile Phones

Please can we remind you that **mobile phones are not allowed in school and should be left at home.**

However, if your child walks to or from school **independently, without adult supervision** and carries a mobile phone for emergencies, please can they remember to hand it in to the office first thing in the morning to be collected at the end of the day.

On no other occasion should they have a phone in school.

Many thanks



Gymnastics - after school club at Hildenborough.

Mondays - 3.15pm to 4.30pm

Year 1 - Year 4

Termly cost £52.25

Monthly cost £12.99

Visit www.premier-education.com

Tel: 01580 212401

**TERM DATES
2017 - 2018**

Term 1
4th September to
20th October

Term 2
31st October
19th December

INSET
30th October
20th December

Term 3
4th January to
9th February

Term 4
19th February to
29th March

Term 5
16th April to
25th May

BANK HOLIDAY
7th May

Term 6
5th June to
20th July

INSET
4th June
23rd July
24th July

September 2018 Admissions

A final reminder for those of you who have a child born between 1st September 2013 and 31st August 2014.

You need to apply for their primary school place by 15th January 2018, **even if they already have a sibling at the school.**

You can apply online at kent.gov.uk/ola



Severe Weather

Should the school be unable to open or have to close early due to bad weather conditions, you will be notified via a ParentmailPMX email or a text message.

To make this successful, please could you ensure your email address and mobile phone number are up to date on your ParentmailPMX account.

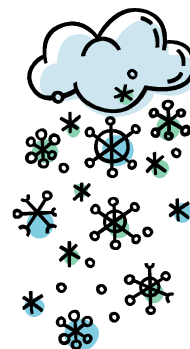
Closure details will also be posted on the www.kentclosures.co.uk website.

The local radio stations will also be informed so tune in to one of the following:-

KMFM - West Kent 96.2/101.6 fm
www.kentschoolclosures.co.uk

BBC Radio Kent 96.7/104.2 fm
www.bbc.co.uk/kent

Heart FM 103.1/102.8 fm
www.heart.co.uk/kent



DIARY DATES



TERM DATES 2017 - 2018

Term 1

4th September to
20th October

Term 2

31st October
19th December

INSET

30th October
20th December

Term 3

4th January to
9th February

Term 4

19th February to
29th March

Term 5

16th April to
25th May

BANK HOLIDAY
7th May

Term 6

5th June to
20th July

INSET

4th June
23rd July
24th July

Term 3

19 Jan YR - Space Dome Visit

09 Feb End of Term

Term 4

19 Feb Parent Consultations (3.30 - 6.30pm)

27 Feb Parent Consultations (3.30 - 7.30pm)

02 Mar World Book Day

27 Mar 9.30am Easter Service @ St John's - all welcome

27 Mar Y3 & Y4 Performance (details to follow)

28 Mar Y3 & Y4 Performance (details to follow)

29 Mar End of Term

Term 5

07 May Bank Holiday

15 May 9.30 am Pentecost @ St John's (children only)

25 May End of Term

04 Jun Inset Day

Term 6

11 Jun Class Photographs

03 July Year 5 & Year 6 Production

20 July 9.30am Leavers Service @ St John's

Letters Home

Curriculum Letter

Report Questionnaire

Worship theme next week : Reflecting on Light

Christian Value : Reverence

Thought for the week: A heart at peace
gives the body life.

